



Peter M Eguia (DVM, Junior Technician/APCF) is performing the daily "cage side assessment" on the wellbeing of mice. He is responsible for caring for about 900 cages of mice in the 7H facility.

# APCF Training Newsletter

Issue 1

Issue 1

## e-Module: Recognition and prevention of pain, suffering and distress in laboratory animals

by Siva WH Tsang (PhD, Scientific Officer, APCF)

Featuring videos, annotated images and questionnaires, the module places the user in situations they may encounter in the laboratory, in order to improve and to test their understanding of how to recognize and prevent pain, suffering and distress in research animals. The realistic scenarios currently focus on rodents, however there is material on other commonly used species, such as zebrafish and rabbits. Information on severity classification and humane endpoints is also included.

(Source: National Center for the Replacement Refinement & Reduction of Animal in Research)

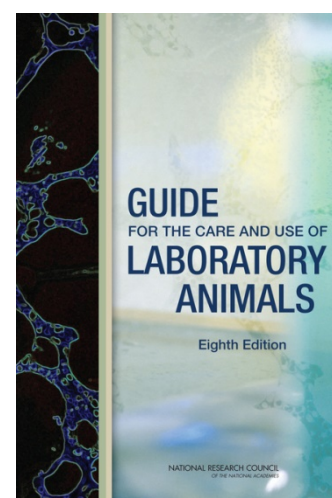
### Why do I need it?

In the *Guide for the Care and Use of Laboratory Animals: 8th Edition (2011)*, NRC: "All animals should be observed for signs of illness, injury, or abnormal behavior by a person trained to recognize such signs. As a rule, such observation should occur at least daily... Unexpected deaths and signs of illness, distress, or other deviations from normal in animals should be reported promptly and investigated, as necessary, to ensure appropriate and timely delivery of veterinary medical care." (p.112)

To enhance the skill of APCF animal caring technical staff, in identifying animal welfare issues, colleagues are encouraged to finish the web-based module *Prevention of Pain, Suffering and Distress in Laboratory Animals*. Research teams are also encouraged to adopt the skill to ensure they are collecting quality data from the animal models with the appropriate conditions.

### About the training material

Created by Prof. Paul Flecknell and his team at Newcastle University, with funding from the NC3Rs, it is the second scenario-based training module to be added to the FLAIR e-learning site.



### What can I learn from the module?

After finishing the module, one is expected to be capable of:

- Identifying signs of welfare issues, in
  - Mice,
  - Rats,
  - Rabbits
  - Zebrafish.
- Differentiating between animals with good welfare and those with signs of
  - Pain
  - Suffering
  - Distress
- Appreciating the factors that can affect the welfare of laboratory animals:
  - Environment
  - Care and husbandry
  - Experimental procedures
- Understanding information about the severity classification of procedures on animals, the concept of cumulative severity and the use of humane endpoints.

### Training Documentation

APCF staff finishing the training module will be verified by a brief assessment and their success will be documented in their individual training record to illustrate their development and professionalism.